



## Atop Technologies, Inc.

### Industrial PoE Injector with DC voltage booster

IJG7001 Series

## Hardware Installation Guide

Version 1.0  
Updated in October, 2019



Tel: 886-3-5508137  
Fax: 886-3-5508131  
www.atop.com.tw

P/N : 89900568G

## Package Check List

Inside the package you will find the following items:

- Inject x 1
- Installation Guide with Warranty Card x 1



Never install or work on electrical or cabling during periods of lightning activity. Never connect or disconnect power when hazardous gases are present.

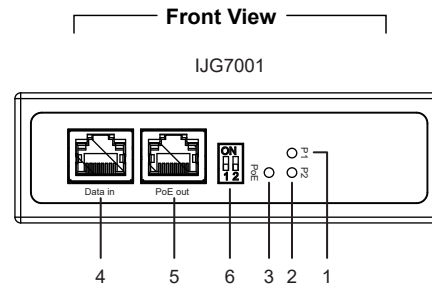


Warning: Hot Surface Do Not Touch. RESTRICTED ACCESS AREA: The equipment should only be installed in a Restricted Access Area.



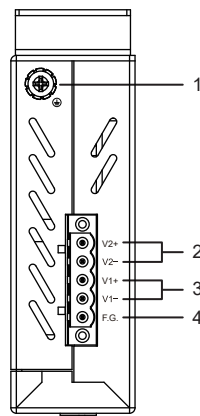
This equipment should be installed indoor and not connect directly with equipment installed outdoor.

## Product Layout



- |             |  |
|-------------|--|
| 1. PWR1 LED | 4. 10/100/1000 BASE-T(X) RJ45 Port           |
| 2. PWR2 LED | 5. 10/100/1000 BASE-T(X) RJ45 PoE RJ-45 Port |
| 3. PoE LED  | 6. DIP Switch                                |

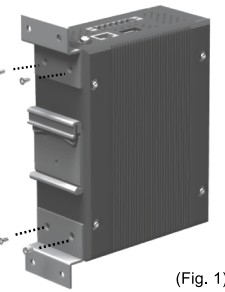
### Top View



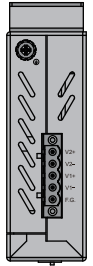
1. Grounding Screw
2. Terminal for Power 2
3. Terminal for Power 1
4. Frame Ground

## Installation Overview

The device's appearance is as in the figure below.



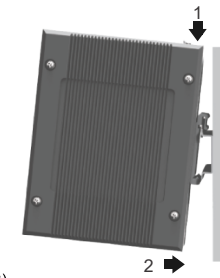
(Fig. 1)



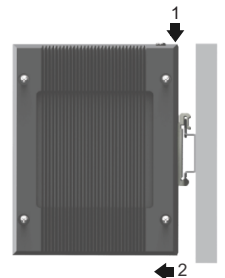
(Fig. 2)

1. If you have purchased the wall mount kit, proceed to place the screws on the back of the device as show in (Fig. 1).
2. Although internal grounding has been done inside, in order to ensure overall maximum performance and protect your device, it is still strongly advised to ground the device properly; hazardous ESD can come into contact and damage your equipment. On the power terminal block, there is a terminal for Frame Ground, you can choose whether to connect it to the grounding or you may opt to connect to the grounding screw next to the terminal block ( the one chosen should be connected at all times ) (Fig. 2)

3. You can then choose whether to plug in the other peripheral ports at this point or do it later depending on the actual location of the device or level of comfort for performing such operation.
4. Once the plate has been firmly put in place, proceed to mount the whole device as shown in (Fig. 3). Proceed to (Fig. 4) if you want to remove the device from DIN-Rail.



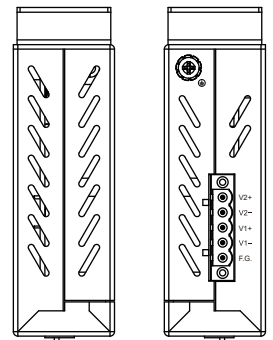
(Fig. 3)



(Fig. 4)

5. Next we can then proceed to connect the device to the LAN (switch or PC, depending on the case), take care on using the RJ-45 connector; after this we can then proceed to the device's settings

- The opening to the sides are for the device's heat dissipation please never obstruct or cover them with any objects or try to insert them through it.



# LED Indicators

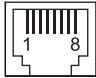
LED	Color	State	Description
P1	Green	On	Power is being supplied through this power input
P2		Off	Power is not supplied through this power input
PoE	Green	On	PoE Device Link
		Off	No PoE Device Detected

# Power Requirements

Power input : 12~57 VDC, 1.7A Max (For 802.3af)  
 12~57 VDC, 3.6A Max (For 802.3at)

# Pin Assignments and Connections

10/100/1000BASE-T(X) Ethernet Pinouts

RJ-45								
<b>10/100BASE-T(X)</b>								
Pin	1	2	3	4	5	6	7	8
Signal	Tx+	Tx-	Rx+			Rx-		
<b>1000BASE-T</b>								
Pin	1	2	3	4	5	6	7	8
Signal	BI_DA+	BI_DA-	BI_DB+	BI_DC+	BI_DC-	BI_DB-	BI_DD+	BI_DD-
<b>PoE (Mode A)</b>								
Pin	1	2	3	4	5	6	7	8
DC	V+	V+	V-			V-		
<b>PoE (Mode B)</b>								
Pin	1	2	3	4	5	6	7	8
DC				V+	V+		V-	V-

# DIP Switch

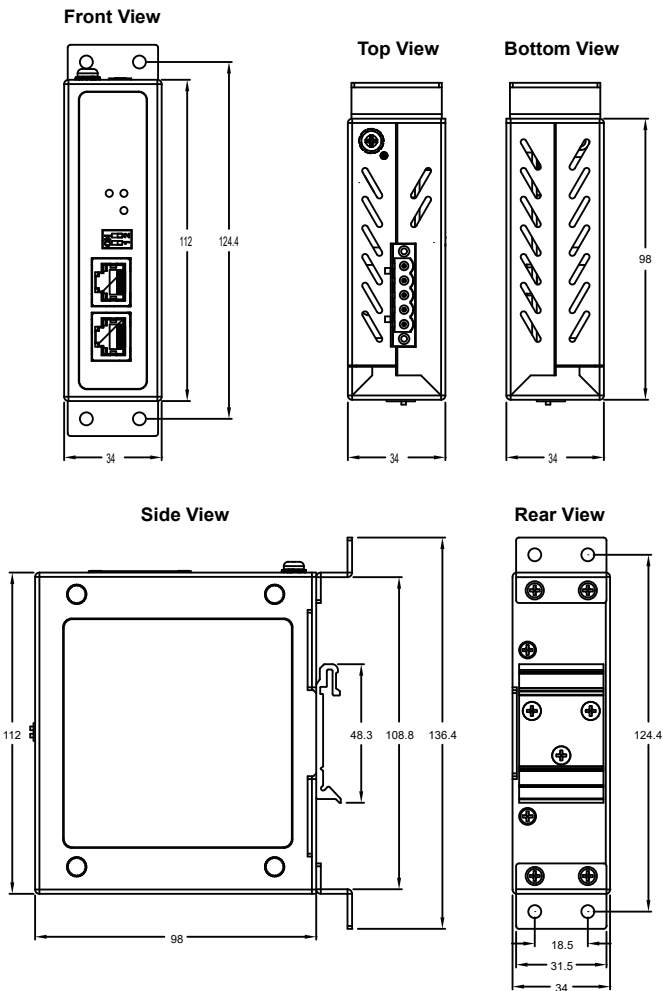
DIP Switch	Setting	Description
1	Mode A(On)	The device provides power via data pair (pins 1, 2, 3, and 6).
	Mode B(Off)	The device provides power via spare pair (pins 4, 5, 7, and 8).
2	Reserved for future use.	

# Field Maintenance and Service

If the device requires servicing of any kind, you may need to disconnect and remove it from its mounting. The initial installation should be done in a way that makes this as convenient as possible.

- Voltage/Power lines should be properly insulated as well as other cables. Be careful when handling the so as to not trip over
- Do not under any circumstance insert foreign objects of any kind into the heat dissipation holes located in the different faces of the device. This may not only harm the internal layout but might cause harm to you as well.
- Do not under any circumstance open the device for any reason. Please contact your dealer for any repair needed or follow the instructions on section of your User's Manual.

# Mechanical Dimensions (Unit=mm)



※ The wall mount kit illustrated in this document is for reference only and is not included in the package.

# Warranty Policy

## Warranty Conditions

Products supplied by Atop Technologies are covered in this warranty for sub-standard performance or defective workmanship. The warranty is not, however, extended to goods damaged in the following circumstances:

- Excessive forces or impacts
- War or an Act of God: wind storm, fire, flood, electric shock, earthquake
- Use of unqualified power supply, connectors, or unauthorized parts/kits
- Replacement with unauthorized parts

## RMA and Shipping Costs Reimbursement

Customers shall always obtain an authorized "RMA" number from Atop before shipping the goods to be repaired to Atop. When in normal use, a sold product shall be replaced with a new one within 3 months after purchase. The shipping cost from the customer to Atop will be reimbursed by Atop.

After 3 months and still within the warranty period, it is up to Atop whether to replace the unit with a new one; normally, as long as a product is under warranty, all parts and labor are free of charge to the customers.

After the warranty period, the customer shall cover the cost for parts and labor. Three months after purchase, the shipping cost from the customer to Atop will not be reimbursed, but the shipping cost from Atop to the customer will be paid by Atop.

## Limited Liability

Atop shall not be held responsible for any consequential losses from using Atop's product.

## Warranty Period

Product Categories	Warranty	Product Categories	Warranty
Ethernet Switches	5 Years	DIN-Rail Power Supplies	3 Years
Wireless		Power Adaptors	1 Year
Serial Device Servers			
Modbus Gateways			
Media Converters		Antennas	
Embedded Device Servers	Other Accessories		
PoE Injectors			

The warranty certification will not be effective until an authorized stamp issued by Atop's overseas agents.

Purchase Date: / / (yyyy/mm/dd)

Serial Number



## Atop Customer Services and Supports

- Please contact your local dealers or Atop Technical Support Center at the following numbers.  
 + 886-3-550-8137 (Atop Taiwan)  
 + 86-21-6495-6232 (Atop China)
- Please report the defected problems via Atop's Web site or E-mail account  
 Web Site : [www.atop.com.tw](http://www.atop.com.tw), e-mail : [service@atop.com.tw](mailto:service@atop.com.tw)  
 Web Site : [www.atop.com.cn](http://www.atop.com.cn), e-mail : [service@atop.com.cn](mailto:service@atop.com.cn)

— Any changes to this material will be announced on Atop website. —